

# TECHNICAL SPECIFICATIONS



3865 North Wickham Road  
Melbourne, Florida 32935  
Main Office (321) 433-5719  
Ticket Office (321) 242-2219

# TABLE OF CONTENTS

CONTACT INFORMATION	3
GENERAL INFORMATION	4
FACILITY DIMENSIONS	5-6
LIGHTING SYSTEM AND EQUIPMENT	7
HOUSE HANG LIGHT PLOT	8
SOUND SYSTEM AND EQUIPMENT	9
MONITOR SYSTEM	10
CURTAIN SCHEDULE	11
ROAD COMPANY PROVISIONS	11
FLY SYSTEM	12
FLY SCHEDULE	13
MAIN STAGE (L3HT) GRID IRON	14
MAIN STAGE (L3HT) THEATER	15
MAIN STAGE (L3HT) SEATING CHART	16
FACILITY MAP	17-19
STUDIO THEATER (BLACK BOX) INFORMATION	20
STUDIO THEATER (BLACK BOX) STAGE	21
ROTUNDA DIMENSION (OUTSIDE BLACK BOX)	22

# CONTACT INFORMATION

## **Bob Papke**

General Manager

[bpapke@asmglobal.com](mailto:bpapke@asmglobal.com)

(321) 433-5719

## **Rob Adams**

Director of Facilities

[radams@asmmelbourne.com](mailto:radams@asmmelbourne.com)

(321) 433-5822

## **Ricky Gonzales**

Director of Facilities Accounting

[rgonzales@asmglobal.com](mailto:rgonzales@asmglobal.com)

(321) 433-5722

## **Ashley Dillow**

Director of Marketing

[adillow@asmmelbourne.com](mailto:adillow@asmmelbourne.com)

(321) 433-5720

## **Paul Edman**

Operations Manager

[pedman@asmmelbourne.com](mailto:pedman@asmmelbourne.com)

(321) 433-5795

## **Melissa Queen**

Event Services Manager

[mqueen@asmmelbourne.com](mailto:mqueen@asmmelbourne.com)

(321) 433-5791

## **Chris Stolpe**

Box Office Manager

[cstolpe@asmmelbourne.com](mailto:cstolpe@asmmelbourne.com)

(321) 433-5714

## **Vincent Russo**

Booking Manager

[vrusso@asmmelbourne.com](mailto:vrusso@asmmelbourne.com)

(321) 433-5823

## **Chris Merrell**

Director of Food and Beverage

[cmerrell@asmmelbourne.com](mailto:cmerrell@asmmelbourne.com)

(321) 433-5827

# GENERAL INFORMATION

## L3 HARRIS TECHNOLOGIES THEATRE

### AUDITORIUM CAPACITY: (Continental Seating)

Orchestra Level: 720  
Orchestra Pit: 122  
Grand Tier: 1,174  
TOTAL: 2,016

*(Accessible Seating 74 included in above numbers.)*

### STAGE DIMENSIONS:

Backstage side wall to side wall 120'  
Proscenium to back wall 50'  
Proscenium opening 27' high by 56' 6" wide  
Grid height 68'  
Height of clear space in wings (below gallery) 31' 6"  
Depth of apron:

- 2' 6" without orchestra pit
- 21' 6" with raised pit

### ORCHESTRA PIT:

19' WIDE by 48' LONG, screw jack elevator  
Travel distance 10'  
Travel speed 2.5 FPM  
*(See Facility Dimensions Diagram)*

### STAGE EQUIPMENT:

Complete portable Wenger orchestra shell  
*(See Attached Fly Schedule)*

### LOADING DOCK:

Covered, standard loading dock at rear of stage  
(2) semi-truck capacity  
20' by 10' dock door  
Ample parking is available for trucks and busses

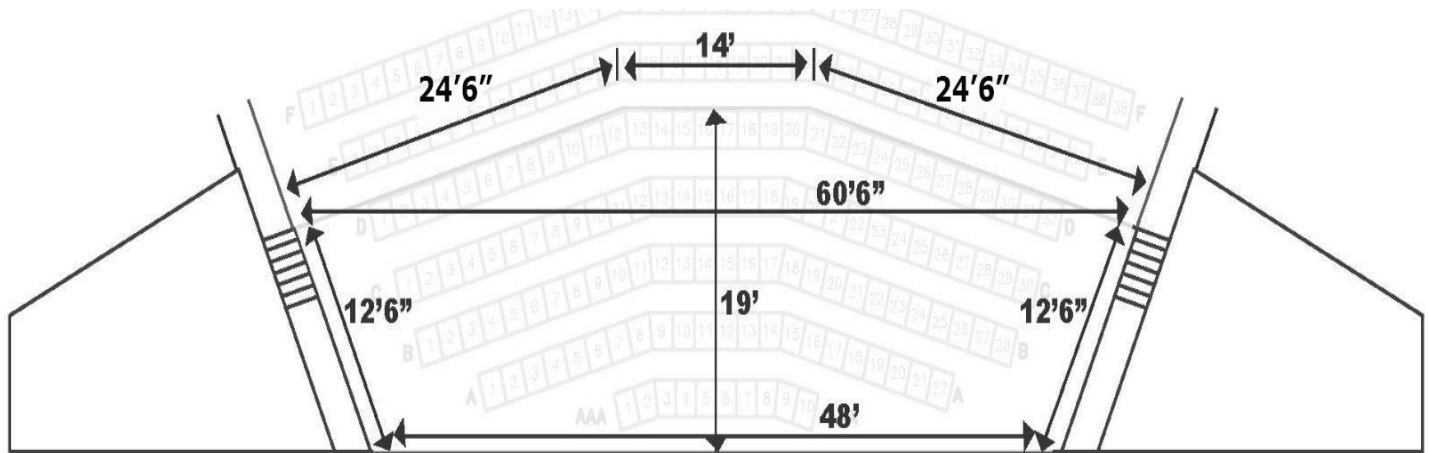
# FACILITY DIMENSIONS

## L3 HARRIS TECHNOLOGIES THEATRE

**STAGE:** 120' by 50' (6,000 SQ FT)  
 68' Deck to bottom of grid  
 Proscenium opening 27' HIGH by 55' 6" WIDE

**LOBBY:** Main floor 97' by 30' (2,910)  
 Mezzanine 97' by 30' (1,649)

**ORCHESTRA PIT:** 56' 19' (1,064)



**BLACK BOX THEATRE:** 73' by 45' (3,285 sq ft) – 18' ceiling

**REHEARSAL HALL (PA168):** 40' by 40' (1,600 sq ft) – 25' ceiling (general use)

**REHEARSAL ROOM (PA160):** 48' by 38' (1,824 sq ft) – 18' ceiling (choral use)

**GREEN ROOM:** 24' by 30' (720 sq ft) – serve performers and crew. Equipped with refrigerator, stage audio and video monitor.

**SCENE SHOP:** 39' by 45' (1,755 sq ft) with 10' by 10' entrance to stage – storage as needed

**DRESSING ROOMS:**

- (6) “Star” dressing rooms with lavatory and shower (hot and cold water)
- (2) “Chorus” dressing rooms with lavatories and showers (hot and cold water)

**WARDROBE ROOM:**

- 500 sq ft
- (2) Washers & (2) Dryers
- Ironing Board, Iron & Steamer
- Rolling Wardrobe Racks
- Lark Sink (hot and cold water)

**THE PLAN**

- 1. Take things out of the truck.**
- 2. Do the show.**
- 3. Put things back inside the truck.**
- 4. Repeat.**

# LIGHTING SYSTEM AND EQUIPMENT

## L3 HARRIS TECHNOLOGIES THEATRE

### DIMMING AND CONTROL:

Control board: Grand MA2 Light  
Dimmers: (253) ETC Sensor CEM3  
Circuits: (253) *dimmer per circuit system*

### LIGHTING FIXTURES:

32 – Elation – KLP500  
10 - Martin Mac Quantum Profile (movers)  
4 – Elations Artiste Picasso  
6 - Chauvet Maverick MK2 WASH  
7 – Chauvet Ovation B-2805FC (CYC)  
30 – S4-10 degree ellipsoidal (FOH)  
8 – S4 –19 degree ellipsoidal  
70 – S4-26 degree ellipsoidal  
50 – S4-36 degree ellipsoidal  
50 – S4 – Par 64  
10 – ACL Bars  
2 – 9 light units  
2 – 40’ double hung lighting with 120 Source 4 Par 64  
4 – CM 1-ton capacity chain motors with 75’ chain  
4 – Lycian 1.2 kw Superstar follow spots  
8 – 10’ pipe and base booms

**INSTRUMENT KEY**

**STAGE**

Chauvet  
Maverick XH10 Wash 48

MAC Quantum Profile 110

Elaton XL Par FC 320

36 Degree Source4 Ellipsoid

**BOX ROOMS**

36 Degree Source4 Ellipsoid

19 Degree Source4 Ellipsoid

**FOH COVE**

10 Degree Source4 Ellipsoid 021

Lycian Super Star 1.2KW FollowSpot 04

**KING CENTER**

**LIGHT PLOT HOUSE HANG**

Drawn by:  
Jeremy Mathew Phugs  
548.331.2733x44  
Email: J.Phugs@tgmshield.com

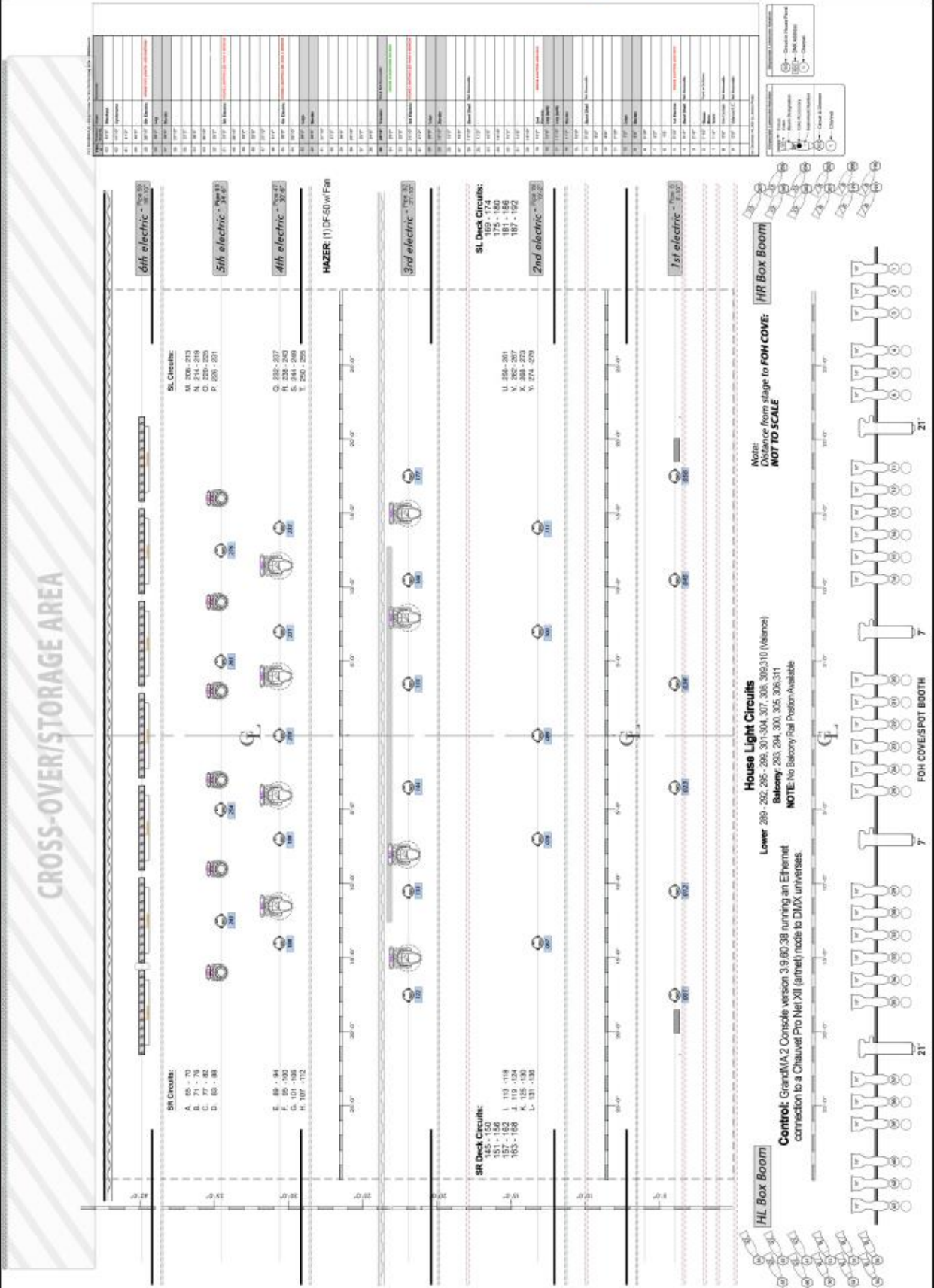
Number of 10'0" Level 021

**Light Plot**

**Sheet 1**

Scale: 3/8"

Revised: January 2, 2023





# SOUND SYSTEM AND EQUIPMENT

## L3 HARRIS TECHNOLOGIES THEATRE

### **SPEAKERS:**

JBL Professional VTX A12 8/Side

JBL Professional VTX A12W 2/Side

JBL Professional VTX B28 6@Center

JBL VTX A-8 Deck Fills 3/Side

JBL VTX B-18 Deck Subs 1/Side

JBL SRX715 Balcony Delay 4 Boxes

JBL AC28/95 Front Fills 6 Boxes

### **AMPLIFIERS:**

28 Crown I-Tech H12000 HD power all speakers

4 Crown IT4x3500 HDS Speak On Version

Version 6 Presets with Performance Manager console

AES Drive Lines

### **CONSOLE:**

DiGiCo SD12 console with Fourier Exchange Engine VTS 3 Plug-in Server

Local I/O 8x8 4x4 AES

Fiber Optic loop with 56x24 32 BIT I/O Rack Onstage & SD Mini Rack @ FOH w/ 4x4 AES I/O, 8x8 Analog I/O

56 Channel copper snake with XLR fan out on FOH end and analog split on stage with XLR fan out

# MONITOR SYSTEM

## L3 HARRIS TECHNOLOGIES THEATRE

**CONSOLES:** DiGiCo SD8

Yamaha PM5D NON RH  
(24 discrete mixes available)

**WEDGE SPEAKERS:** 16 - JBL VTX M20 2x10  
18 – JBL Concert Series Model 4802 (2 way)  
2 – 12” speaker  
1 – 2” horn

**SIDE FILLS:** 4 – JBL SRX 715  
1 – 15” speaker  
1 – 2” horn

### MICROPHONES:

8 – Shure UR2 wireless handheld with Beta 87 Capsules  
8 – Shure UR1 wireless body packs with Sennheiser MKE- 2 lavaliers

#### **DYNAMIC:**

- 16 – Shure SM58
- 10 – Shure SM57
- 2 – Shure Beta 52
- 9 – Sennheiser 421
- 2 – Audix OM-5
- 1 – Audix D6
- 4 – Audix D2
- 4 - Audix D4
- 2 – Beta 91

#### **CONDENSER:**

- 2 – AKG 414
- 2 – Shure SM87
- 6 – Shure SM81
- 2 – Shure BETA SM91
- 3 – Audix SCX1
- 4 – Shure 412 Podium Mics
- 4 – AT 2021
- 2 – AKG 214

**DIRECT BOX:** 14-Countryman Model 85 (Active)  
2-Radial Stereo (Passive) PRO DI2  
2-Radial Stereo Pro A/V2

**PAGING:** Dressing rooms, green room, front of house and/or lobby

## **CURTAIN SCHEDULE**

### **L3 HARRIS TECHNOLOGIES THEATRE**

<b>SIZE</b>	<b>COLOR</b>	<b>MATERIAL</b>	<b>QUANTITY</b>	<b>TYPE</b>
32' H x 14' W	Black	Velour	6 pairs	Leg
16' H x 70' W	Black	Velour	5	Border
30' H x 70' W	Black	Velour	1	Backdrop
28' H x 60' W	Black	Velour	1	Traveler
30' H x 60' W	Green	Velour	1	Act Curtain
30' H x 60' W	Natural	Cloth	1	Cyclorama
30' H x 60' W	Black	Sharks Tooth	1	Scrim

## **ROAD COMPANY PROVISIONS**

### **AUDIO**

1 – 200-amp 3 phase disconnect (isolated earth ground) with cam connectors  
Stage Right & Stage Left

### **LIGHTING**

1 – 400-amp 3 phase disconnect company switch with cam connectors  
1 – 600-amp 3 phase disconnect company switch

### **BUS POWER**

3 – Bay each with 2-phase 250-volt, 50-amp receptacles

All electrical service is stage right, audio ONLY stage left (1) 200-amp service. All approximately 25' from proscenium. The building is equipped with one upright electric man lift, having a working height of up to 42'.

## **FLY SYSTEM**

### **L3 HARRIS TECHNOLOGIES THEATRE**

Arbor Capacity	1,500 lbs.
Arbor Capacity (Electrics)	2,000 lbs.
Batten Low Trim	4' off deck
Length of Travel	61'
Height to bottom of grid	67'
Height to pin rail	38' 6"
Available Weight:	
Upstairs:	15,000 lbs.
Downstairs:	4,550 lbs.
Total:	19,550 lbs.

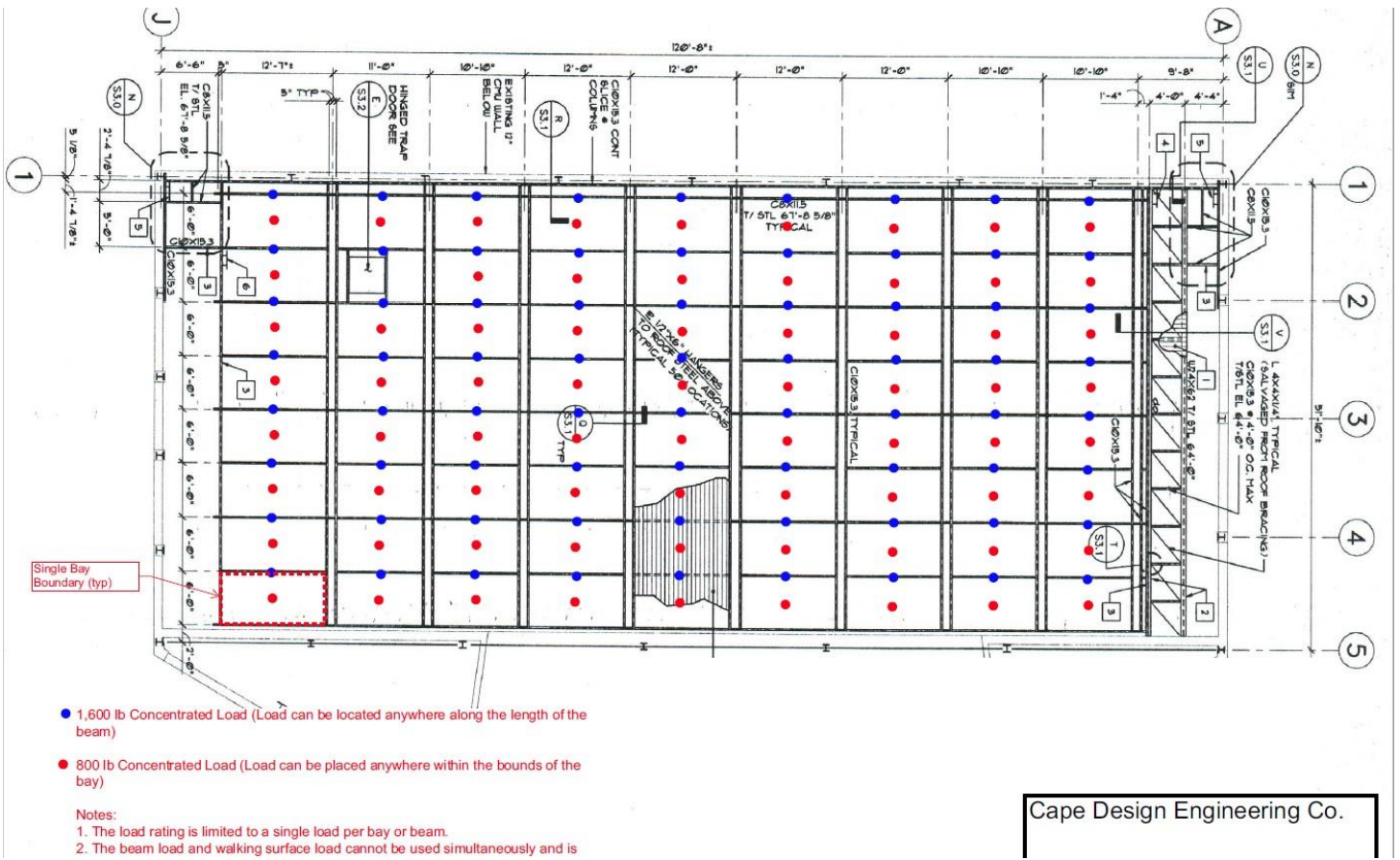
Pipe #	Distance from P.L.	Usage	Comments
A	0' 0"	Valance/F.C.	<b>**Not removable**</b>
B	0' 0"	Fire Curtain	<b>**Not removable**</b>
1	1' 2"	Spare	
2	1' 10"	House Main	Travel or Guillotine
3	2' 6"	Legs	
4	3' 2"	Band Shell	<b>**Not removable**</b>
5	3' 10"	1st Electric	House Lighting LED Pars
6	4' 6"	Spare	
7	5' 2"	Spare	
8	5' 10"	Spare	
9	6' 6"	Border	
10	7' 2"	Legs	
11	7' 10"	Spare	
12	8' 6"	Spare	
13	9' 2"	Spare	
14	9' 10"	Band Shell	<b>**Not Removable**</b>
15	10' 6"	Spare	
16	11' 2"	Border	
17	11' 10"	Legs (split)	
18	12' 6"	Legs (split)	
19	13' 2"	2nd Electric	House Lighting LED Pars
20	13' 10"	Spare	
21	14' 6"	Spare	
22	15' 2"	Spare	
23	15' 10"	Spare	
24	16' 6"	Spare	
25	17' 2"	Spare	
26	17' 10"	Band Shell	<b>**Not removable**</b>
27	18' 6"	Spare	
28	19' 2"	Spare	
29	19' 10"	Border	
30	20' 6"	Legs	
31	21' 22'	Spare	
32	21' 10"	3rd Electric	House Lighting LED Pars
33	22' 6"	Spare	
34	23' 2"	Spare	House Projection Screen
35	23' 10"	Traveler	<b>**Track Not Removable**</b>
36	24' 6"	Spare	
37	25' 2"	Spare	
38	25' 10"	Spare	
39	26' 6"	Spare	
40	27' 2"	Spare	
41	27' 10"	Spare	
42	28' 6"	Border	
43	29' 2"	Legs	
44	29' 10"	Spare	
45	30' 6"	4th Electric	House Lighting LED Pars
46	31' 2"	Spare	
47	31' 10"	Spare	
48	32' 6"	Spare	
49	33' 2"	Spare	
50	33' 10"	Spare	
51	34' 6"	5th Electric	House Lighting LED Pars & Mavericks
52	35' 2"	Spare	
53	35' 10"	Spare	
54	36' 6"	Spare	
55	37' 2"	Spare	
56	37' 10"	Spare	
57	38' 6"	Border	
58	39' 2"	Legs	
59	39' 10"	6th Electric	House LED Ovations
60	40' 6"	Spare	
61	41' 2"	Spare	
62	41' 10"	Cyclorama	
63	42' 6"	Blackout	

# GRID IRON

## L3 HARRIS TECHNOLOGIES THEATRE

Allowed Uniform Live Load Capacity

A total distributed live load of 20 psi is acceptable.



# STAGE MAP

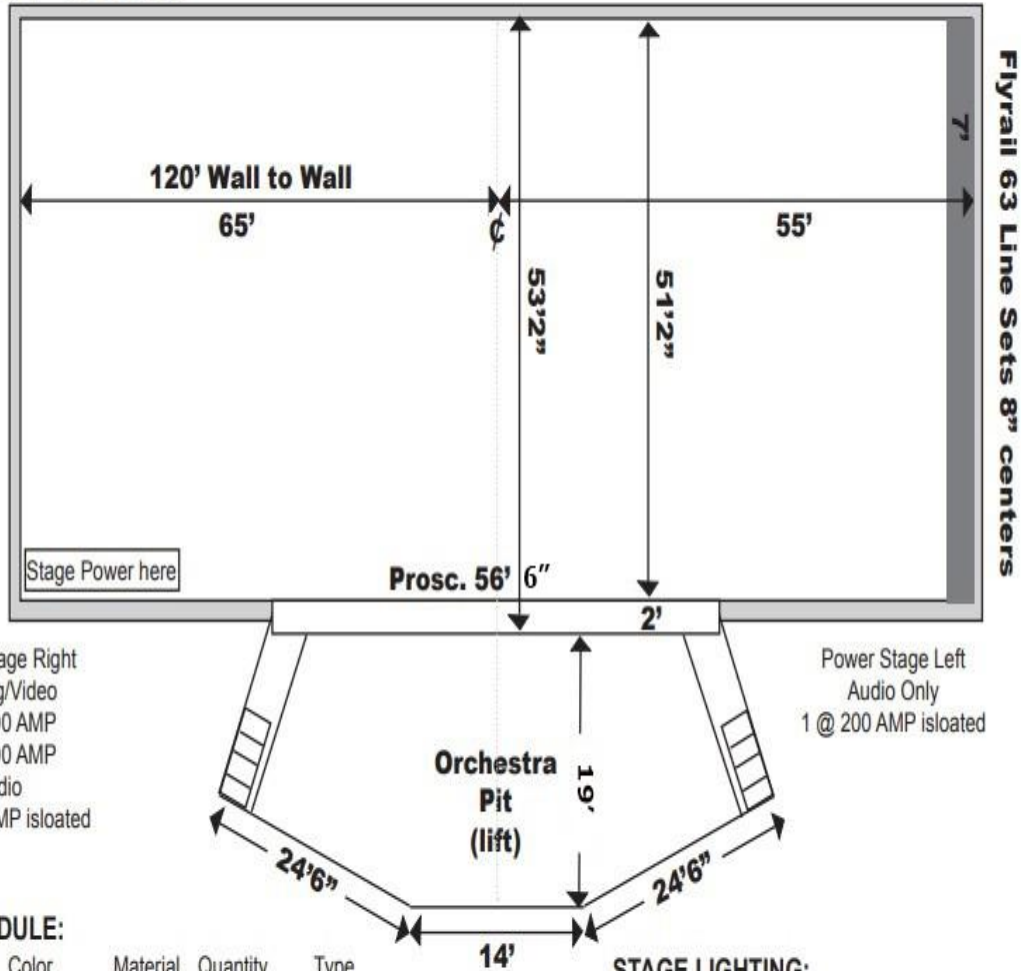
## L3 HARRIS TECHNOLOGIES THEATER



Melbourne, Florida

### Stage Map

Proscenium 27' x 56'6"  
 Stage 120' x 53'  
 Apron 2'  
 Orchestra Pit 56' x 19'



Power Stage Right  
 Lighting/Video  
 1 @ 600 AMP  
 1 @ 400 AMP  
 Audio  
 1 @ 200 AMP isolated

Power Stage Left  
 Audio Only  
 1 @ 200 AMP isolated

**CURTAIN SCHEDULE:**

Size	Color	Material	Quantity	Type
32'H x 14'W	Black	Velour	6 pairs	Leg
16'H x 70'W	Black	Velour	5	Border
30'H x 70'W	Black	Velour	1	Backdrop
28'H x 60'W	Black	Velour	1	Traveler
30'H x 60'W	Green	Velour	1	Act Curtain
30'H x 60'W	Sky Blue	Cloth	1	Cyclorama
30'H x 60'W	Black	Sharks Tooth	1	Scrim

General House Goods Hang (48' Leg to Leg)

**STAGE LIGHTING:**

- Overhead fixtures are 26 Chauvet Par Quad (LED)  
10 Martin Mac Quantum Profile (movers).
- FOH Fixtures are all S4-10 degree instruments.  
Box boom units are S4-26 degree instruments.
- Spot Lights: 4-Lycian 1.2 kw superstar
- 68' to grid on stage.

Not to Scale  
10/2017 DB

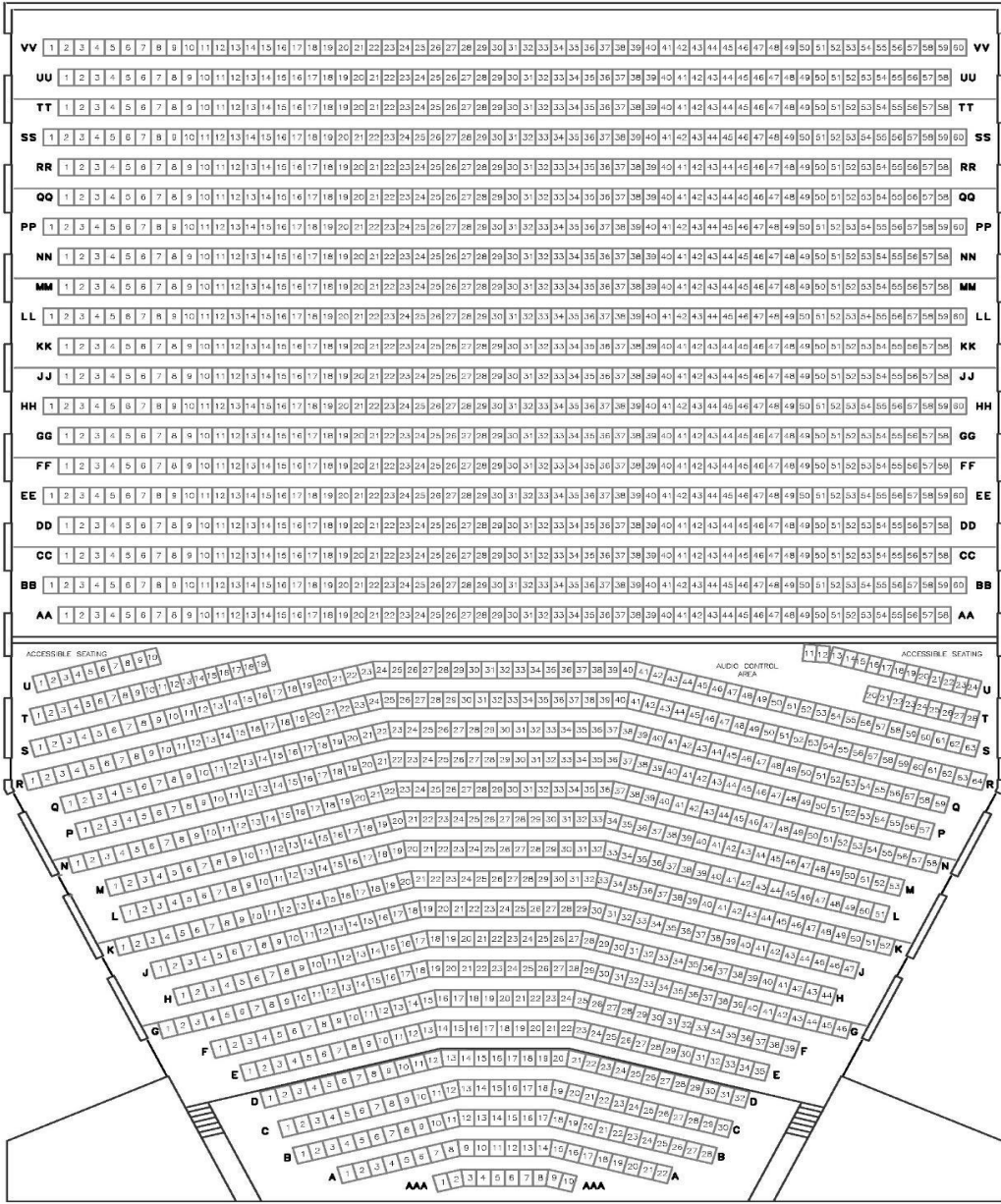


# THEATER SEATING CHART

## L3 HARRIS TECHNOLOGIES THEATER

GRAND TIER

GRAND TIER



Administration • 321.433.5719

Ticket Office • 321.242.2219

FAX: 321.433.5817



www.kingcenter.com  
3865 North Wickham Rd. • Melbourne, FL 32935

Total Seating Capacity	2016
Orchestra Pit	122
Orchestra	720
Grand Tier	1174
Accessible Seating (included in above numbers)	74

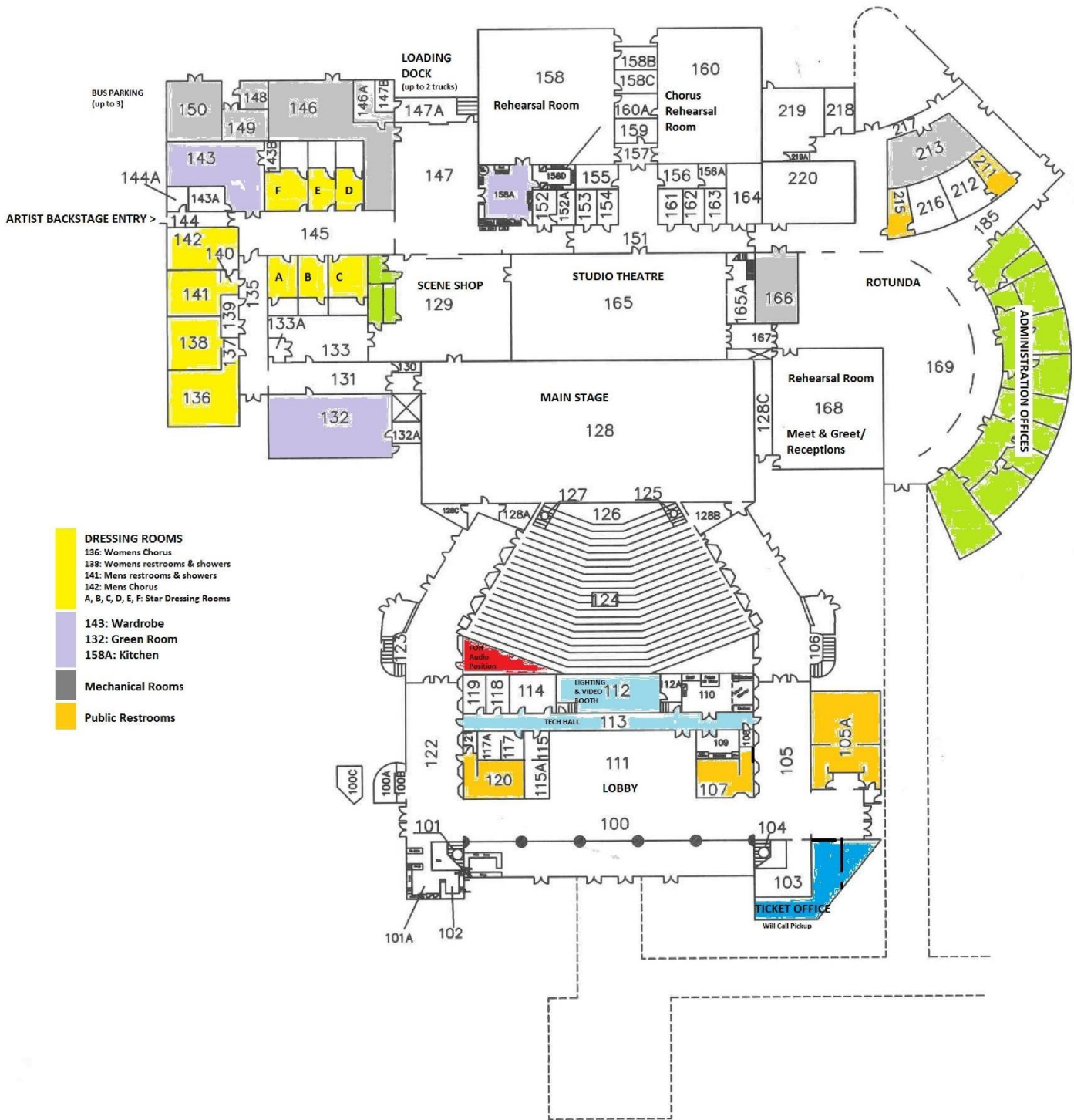
REVISION DATE : 08/2014





# FACILITY MAP

## MAXWELL KING CENTER FOR THE PERFORMING ARTS



## FACILITY PARKING MAP

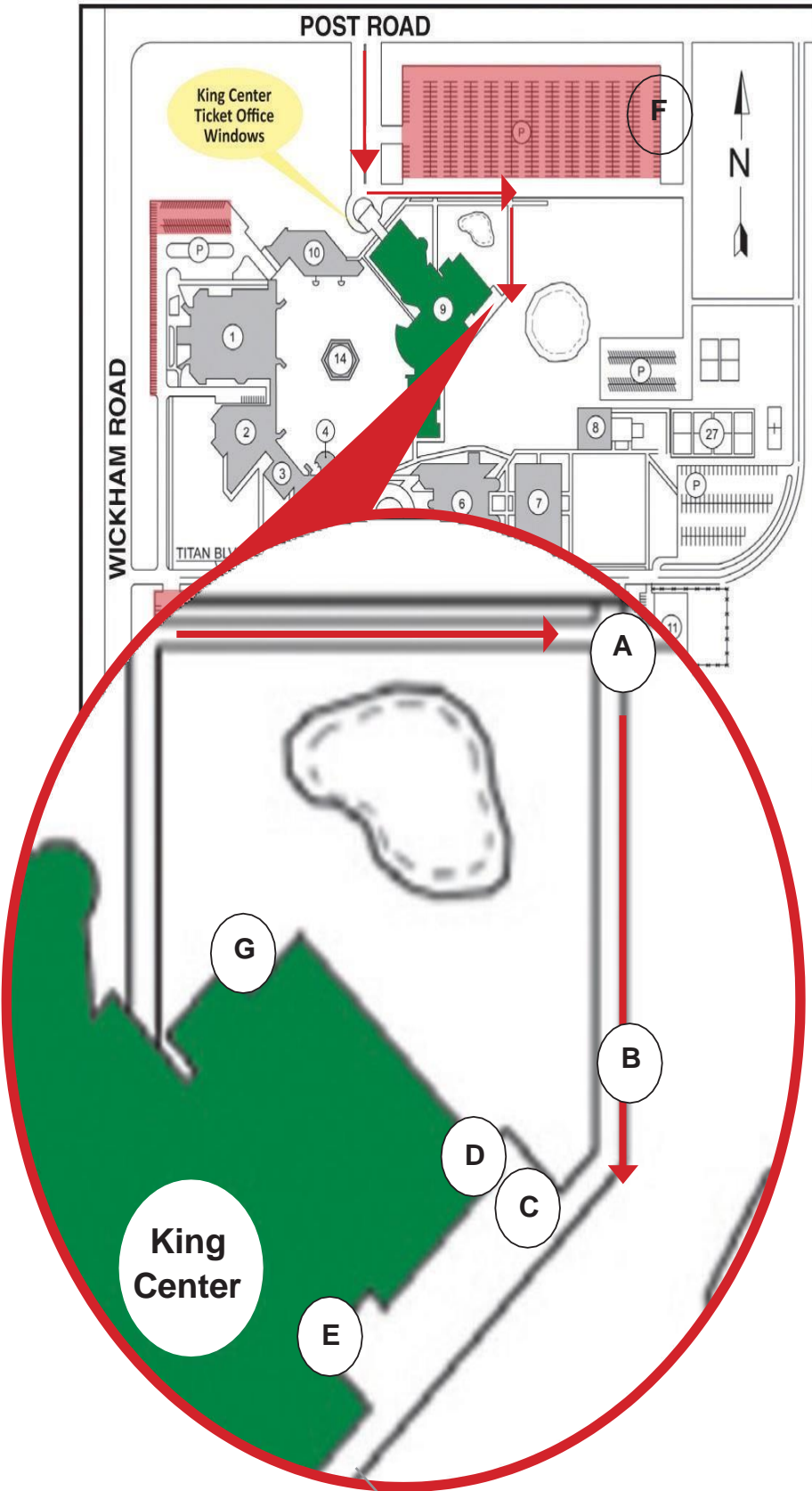
**The King Center is located on the corner of Post and Wickham Roads in Melbourne, Florida.**

**Directions from Interstate 95 Southbound:** Take Exit 188/East onto 404 Pineda Causeway Extension toward Satellite Beach/Patrick Air Force Base. At end of exit ramp, turn east (left) onto 404. Continue about 2.5 miles, then turn right onto CR-509/Wickham Road going south for 2 miles. Then turn left onto Post Road. The King Center entrance is on the south side of Post Road (first right).

**Directions from Interstate 95 Northbound:** Take Exit 188/East onto 404 Pineda Causeway Extension toward Satellite Beach/Patrick Air Force Base. At end of ramp turn right onto 404. Continue about 2.5 miles, then turn right onto CR-509/Wickham Road going south for 2 miles. Then turn left onto Post Road. The King Center entrance is on the south side of Post Road (first right).

**Directions from Highway 1 Southbound:** Heading south on Hwy1, turn right onto Post Road, continue for approximately 1.5 miles. The King Center entrance is on the south side of Post Road (on the left) just beyond the EFSC Tennis Courts. **Directions from Highway 1 Northbound:** Heading north on Hwy 1, turn left onto Post Road, continue for approximately 1.5 miles. The King Center entrance is on the south side of Post Road (on the left) just beyond the EFSC Tennis Courts.

**KING CENTER ENTRANCE**



King Center for the Performing Arts  
3865 N Wickham Rd  
Melbourne, FL 32935

Located on the campus of Eastern  
Florida State College, Building 9 (in  
green)

- A - Artist/Bus/Truck Entrance**
- B - Gate (Code Required)**
- C - Artist Bus Parking**
- D - Backstage Entrance**
- E - Loading Dock**
- F - Additional Semi-Truck Parking**
- G - Green Room Outside Entrance**

# INFORMATION

## STUDIO THEATER (BLACK BOX THEATER)



### GENERAL:

Capacity: 250+/- flexible seating

Dimensions: 45' by 73' (3255 sq. ft.)  
Ceiling height: 18' floor to grid (tension wire rope grid)  
Direct entrance into scene shop

### DIMMING AND CONTROL:

Grand MA3 on PC Command Wing  
Circuits: 96

### LIGHTING FIXTURES:

12 - Chauvet Rogue R2x Wash  
6 - Lightronics 5in 1 LED PARS  
5 - MH2 Martin Wash  
6 - ETC 26\* LEKO's  
20 - S4 - PAR's

### AUDIO CONSOLE:

Midas M32 Digital Console  
Inputs 32 XLR, 8 AUX  
Outputs 16 XLR, 1 AES

### STAGE BOX:

Midas DL32 Digital Snake – 32 inputs / 16 outputs XLR

### MAIN SPEAKERS:

Main hang: JBL Concert Series Model 4850 (2 per side flown)  
Main deck: JBL Concert Series Auxiliary Sub Model 4842 (1 per side)  
Down fill: JBL Concert Series Model 4825 (1 per side)  
Zone control: DBX 4800  
Front Fill: JBL Marquis Series Model MS26 (4 across front)

### POWER AMPS:

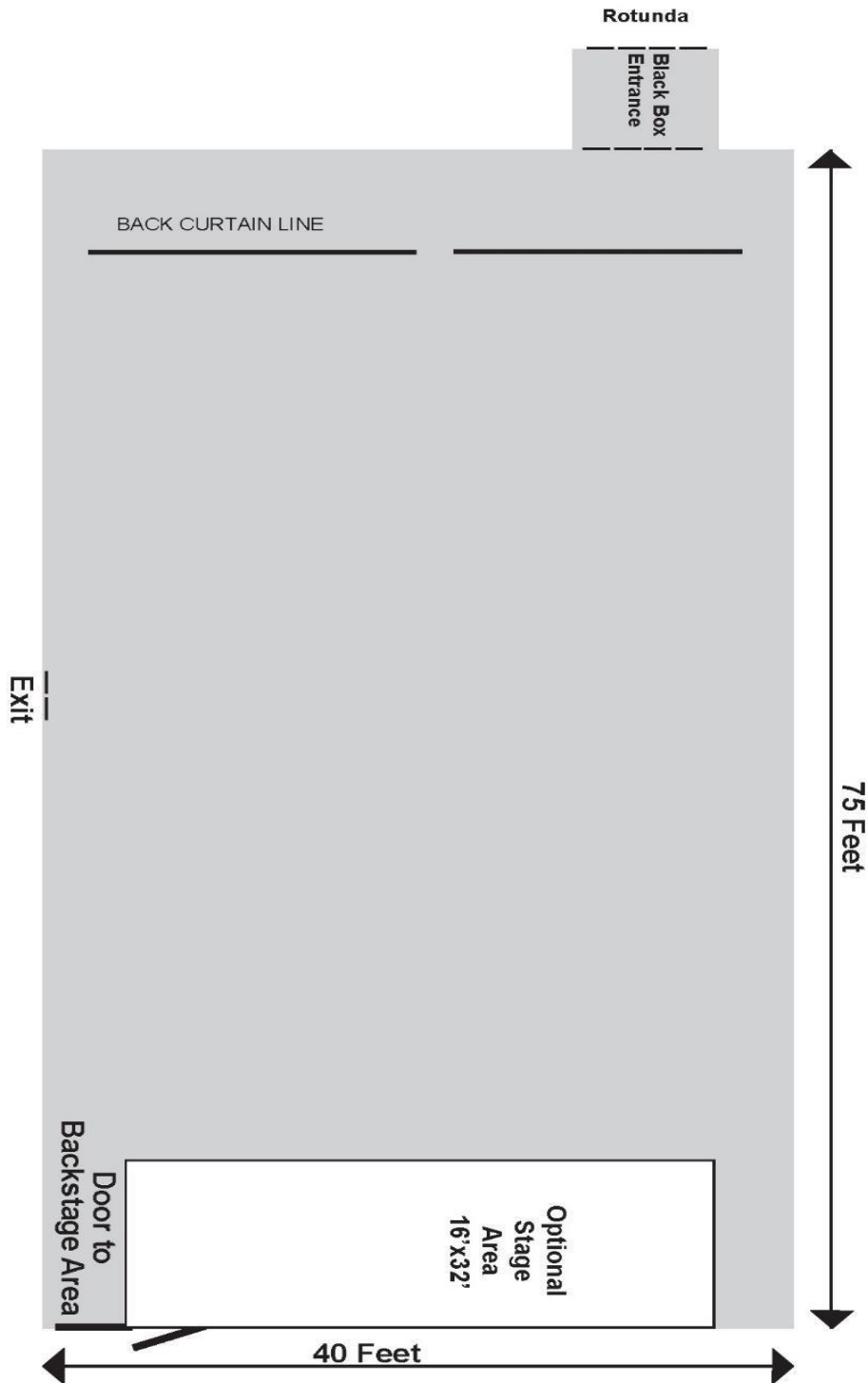
Crown I-Tech 6000 & 4000

### MONITOR SPEAKERS:

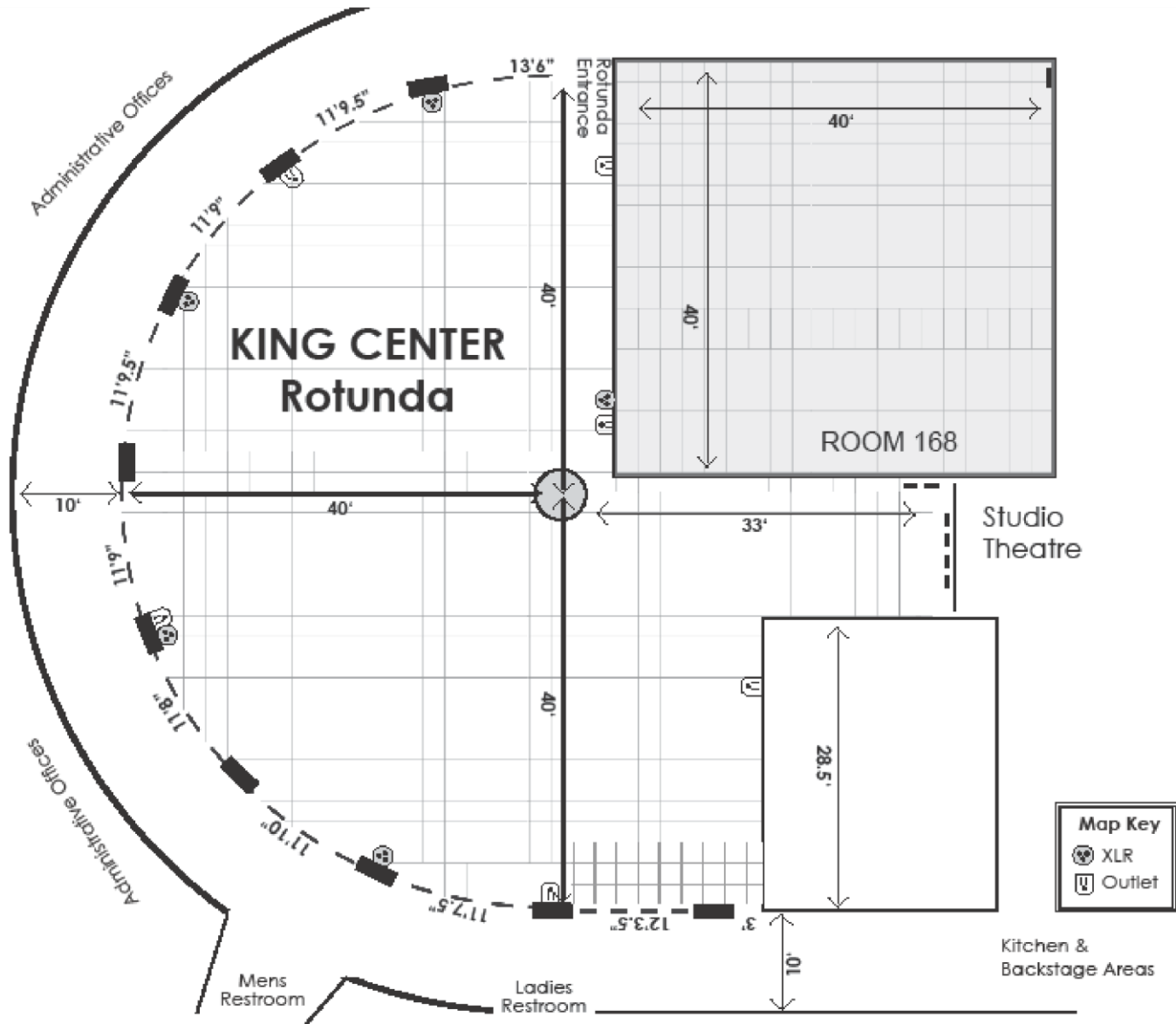
JBL Concert Series  
8 Wedges Model 4802 A (12x12x2)  
6 In House Wedge Mixes  
All Crossovers for Monitors  
BSS FS-318  
All AMPS QSX 1500 (1 per cabinet bi-amped)

# STAGE

## STUDIO THEATER (BLACK BOX THEATER)



# ROTUNDA DIMENSIONS OUTSIDE OF STUDIO THEATER (BLACK BOX THEATER)



THE END